

THE REGIUS

BY



About The Regius

- The Regius is a mini-estate of 5 Units of 6-bedroom Duplexes, with an En-suite BQ, sitting on a 2479.74Sqm of Land.
-
- Location : Katampe, beside Minister's Quarters, Abuja, Nigeria.
-
- Price: Starting at 1 Billion Naira

An exclusive residential development set to redefine the standard of living in the heart of Abuja.

Strategically located in a prime area of the capital city; just by the Prestigious Minister's Quarters and overseeing the Maitama District, The Regius combines a stunning blend of architectural sophistication, smart design, and world-class amenities - setting a whole new standard for luxury and comfort in urban living.

It is designed for individuals seeking refined living, privacy, and unparalleled comfort.

A Lifestyle Like No Other

From expansive layouts to top-tier finishes, The Regius offers an unmatched living environment. Each unit is thoughtfully crafted with spacious interiors, smart home technology, solar powered electricity, high-end fittings, and expansive glass panel windows that offer panoramic views of the city's skyline. Each residence is meticulously designed to reflect the highest standards of modern luxury.

Residents enjoy a curated selection of lifestyle amenities, including private swimming pools, elevators, gazebo, rooftop lounges, electric vehicle charging points and privacy.

STANDARD FEATURES PER UNIT OF THE

6-Bedroom Duplex (All Ensuite)

-
- An ante-room, with visitor's toilet
 - An ensuite guest room
 - 3 Balconies
 - A kitchen + store
 - Car park for 5 to 6 cars
 - A living room + dining
 - A home office/private lounge
 - A Lift
 - Full smart home automation (optional)
 - Electric vehicle charging points
 - An open family lounge
 - A box room
 - A space for cinema or a dry kitchen
 - Individual swimming pool with its own sit-out
-

Basic Spaces

- Ante-room + visitors toilet: 12.96sqm
 - Guest bedroom+ bathroom: 15.67sqm
 - Living room : 54.75 sqm
 - Kitchen + store: 22.6sqm
 - BQ+bath: 10.8sqm
 - Bedroom 1+ bath : 27.56sqm
 - Bedroom 2 +bath: 27.56sqm
 - Open family lounge: 27sqm
 - Home office/ private lounge: 19sqm
 - Bedroom 3+ bath : 54sqm
 - Balcony 1: 8sqm
 - Balcony 2: 7 sqm
 - Bedroom 4 + bath: 55sqm
 - Bedroom 5 + bath : 61sqm
 - Masters' bedroom sit-out: 16sqm
 - Space for a private cinema or private lounge: 13sqm
 - Box room : 7 sqm
-













GATE 2, SHOWING THE
GENERAL SIT-OUT AND
ELECTRIC VEHICLE
CHARGING POINT

THE REGIUS



Interior Renderings





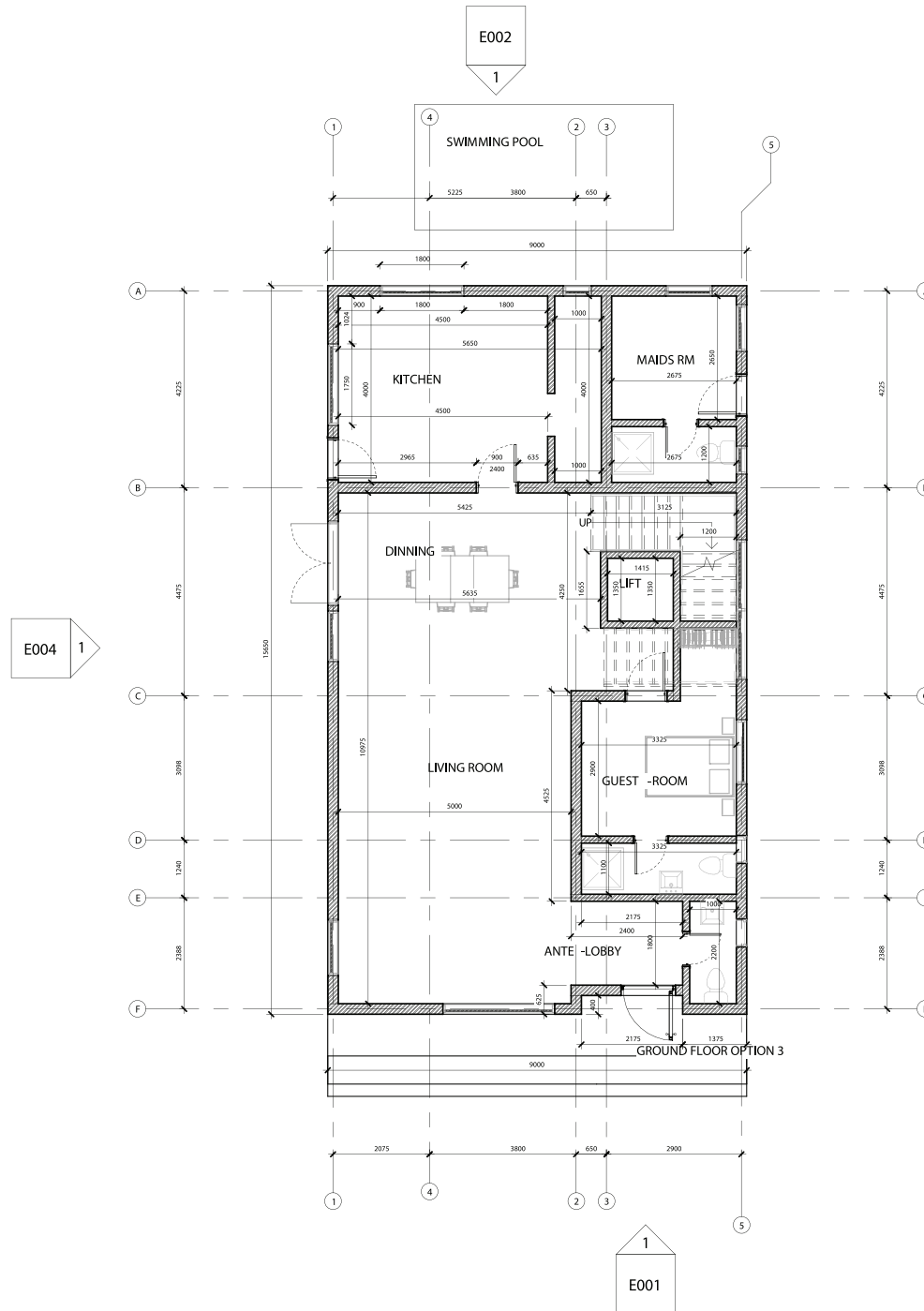






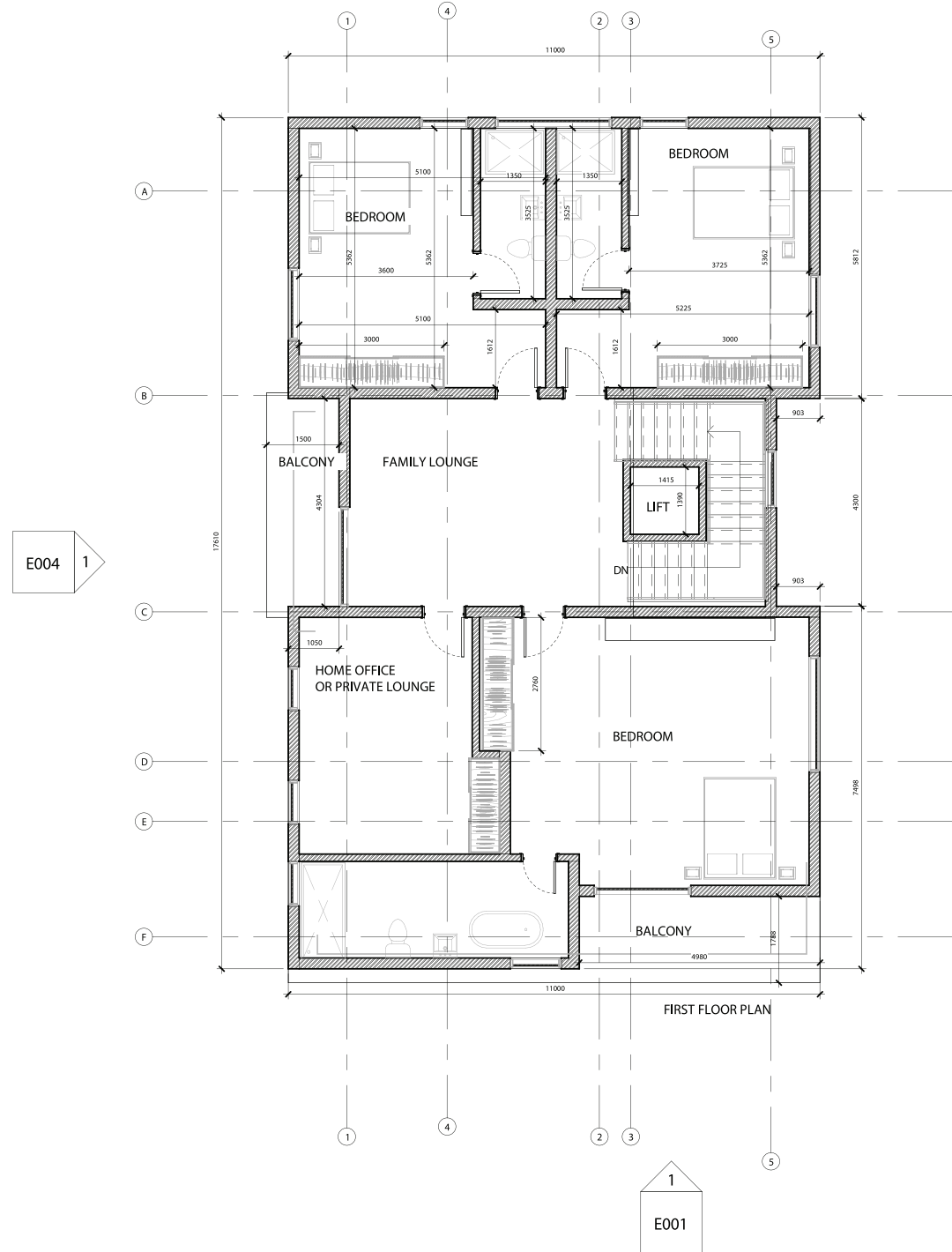
Floor Plans

GROUND FLOOR
OPTION

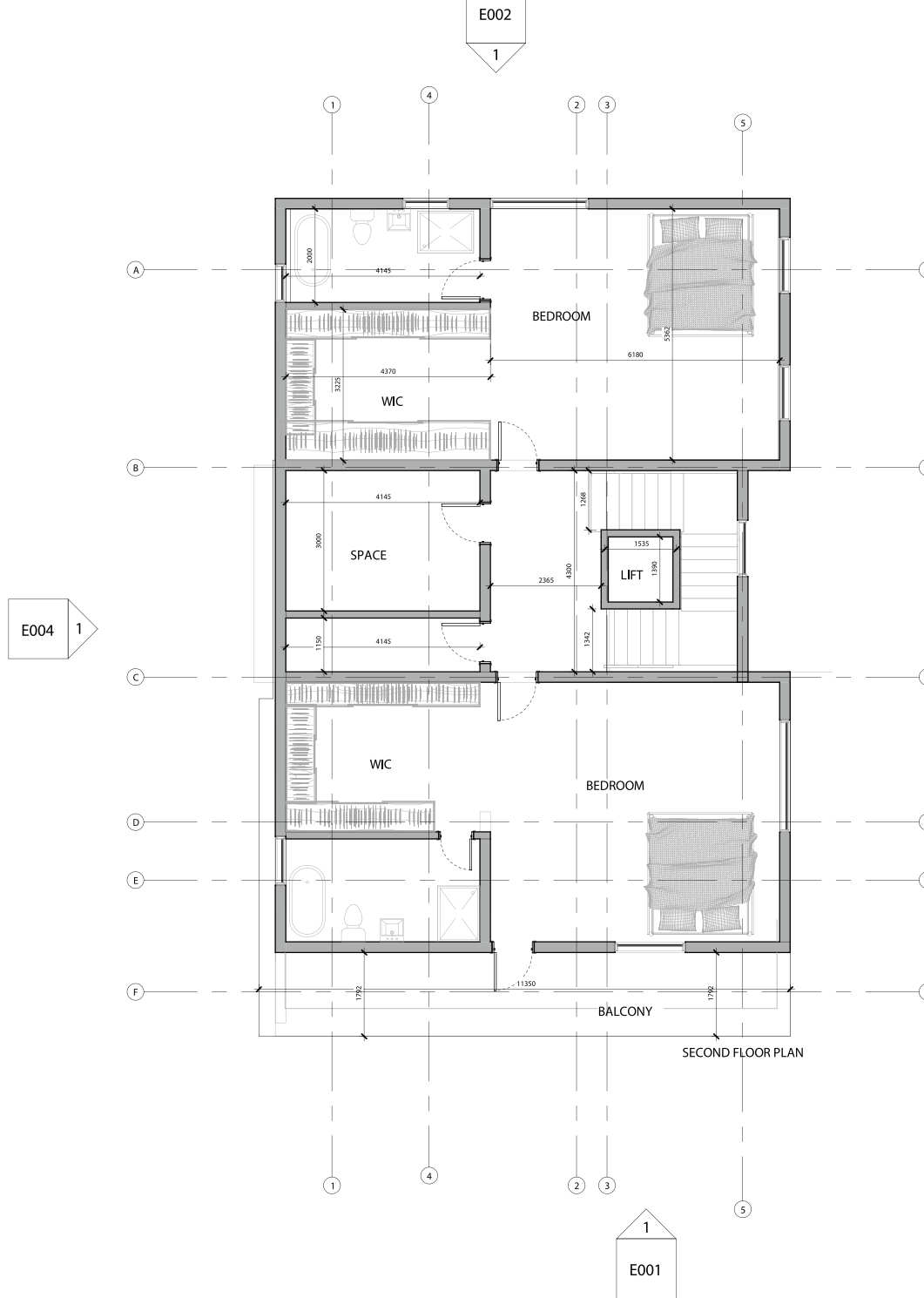


FIRST FLOOR
PLAN

THE REGIUS



SECOND FLOOR PLAN





 www.poloresidences.com

 info@poloresidences.com

 09115555115 | 09116666116

 29 Durban Street, Wuse 2, Abuja